

# HANGING LAMP 9 CABLES CALOT

## Designer

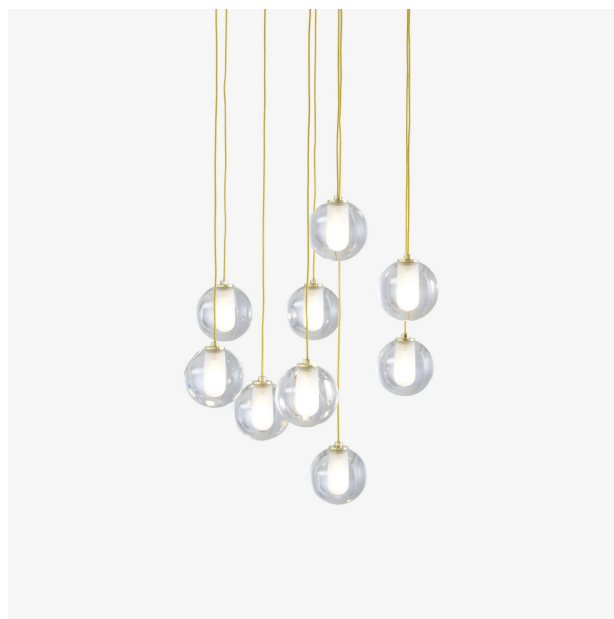
Patrick Zulauf

## Description

Suspended light with shade in transparent resin Ø 3 1/4" - 8 cm, with a polished sanded section for the bulb. 98 1/2" - 2.50 m long woven metal cable in a brass-effect finish. 'Coulistop' height adjustment system. Epoxy satin white lacquered ceiling fitting H 1 1/4" - 3 cm Ø 15 3/4" - 40 cm. Supplied with 9 x 1.2 W 12 V G4 LED bulbs, color temperature 3,000K (warm white), 100 Lumens. Non-dimmable LED bulb.

## Technical characteristics

Table lamp with chromed steel stem, base (Ø 3 1/2" / 9 cm - H 1 1/2" / 3.5 cm) in white marble, white PVC cable and white manual switch. Shade (Ø 3 1/2" - 9 cm) in transparent resin with a polished, frosted section for the bulb. Supplied with 1 x 2 W



## Sizes

Height 102 " | Diameter 15 " | Weight 14.22 lb

More information on  
[www.ligne-roset.com](http://www.ligne-roset.com)

**ligne roset**<sup>®</sup>  
depuis 1860

© Ligne Roset 2025

G4 LED bulb, color temperature 3,000K (warm white), 220 Lumens. Table lamp with clear matt varnished brass-coated steel stem, base (Ø 3 1/2" / 9 cm - H 1 1/2" / 3.5 cm) in black marble, black PVC cable and black manual switch. Shade (Ø 3 1/2" - 9 cm) in transparent resin with a polished, frosted section for the bulb. Supplied with 1 x 2 W G4 LED bulb, color temperature 3,000K (warm white), 220 Lumens. Reading light with chromed steel stem, base (Ø 5 1/2" / 14 cm - H 1 1/2" / 3.5 cm) in white marble, white PVC cable and white manual switch. Shade (Ø 3 1/2" - 9 cm) in transparent resin with a polished, frosted section for the bulb. Supplied with 1 x 2 W G4 LED bulb, color temperature 3,000K (warm white), 220 Lumens. Reading light with clear matt varnished brass-coated steel stem, base (Ø 5 1/2" / 14 cm - H 1 1/2" / 3.5 cm) in black marble, black PVC cable and black manual switch. Shade (Ø 3 1/2" - 9 cm) in transparent resin with a polished, frosted section for the bulb. Supplied with 1 x 2 W G4 LED bulb, color temperature 3,000K (warm white). 220 Lumens. Suspended light with shade in transparent resin Ø 3 1/4" - 8 cm, with a polished sanded section for the bulb. 98 1/2" - 2.50 m long woven metal cable in a brass-effect finish. 'Coulisstop' height adjustment system. Epoxy satin white lacquered ceiling fitting H 1" - 2.5 cm Ø 4 3/4" - 12 cm. Supplied with 1 x 1.2 W 12 V G4 LED bulb, color temperature 3,000K (warm white), 100

Lumens. Non-dimmable LED bulb.  
Suspended light with shade in transparent resin Ø 3 1/4" - 8 cm, with a polished sanded section for the bulb. 98 1/2" - 2.50 m long woven metal cable in a brass-effect finish. 'Coulisstop' height adjustment system. Epoxy satin white lacquered ceiling fitting H 1 1/4" - 3 cm Ø 15 3/4" - 40 cm. Supplied with 9 x 1.2 W 12 V G4 LED bulbs, color temperature 3,000K (warm white), 100 Lumens. Non-dimmable LED bulb.