

MOËL 2

Design by
Inga Sempé

Description

In 2017, Moël celebrates its 10th birthday by complementing itself with Moël 2, which adopts a new covering material for the round of its back: a 5 mm thick wool felt, available in a choice of 5 colors: anthracite, blanc mélange, gris, terra cotta, and moss. In addition, the seat and the interior of the backrest of Moël 2 are now available in 2 versions:

- the usual Moël bands of regular vertical quilting, or
- a special new style of quilting in tighter bands of quilting with interrupted stitching, creating a dynamic rhythmic effect.

Moël 2 speaks directly to all those who live in a natural, casual style and whose wish is to create a warm, intimate living space in which to receive friends. Its very high degree of comfort is affirmed by its softly rounded lines which combine to create a convivial space - and which almost make one forget that it bears no resemblance to any other seat.

Technical Specifications

CONSTRUCTION

Shells in thermoformed ABS (a combination of resin + elastomer which results in a highly resistant form of plastic) clad in polyether foam 34 kg/m³ - 5.7 kPa. Decorative rear feet covered to match rest of seat.

COMFORT

Integral seat cushion in high resilience polyurethane Bultex foam 32 kg/m³ - 2.8 kPa clad in a comfort layer of Bultex foam 26 kg/m³ - 1.4 kPa. Seat cover quilted with Bultex 26 kg/m³ - 1.4 kPa. Integral back cushion with headrest, lumbar cushion, and armrests in Bultex 26 kg/m³ - 1.4 kPa clad in 200 g/m² polyester quilting. Footstool in Bultex 48 kg/m³ - 5.3 kPa.

MAKING-UP

Covers of back and seat are quilted with 300 g/m² polyester on their interior faces, creating a structured visual effect of quilted bands. Covers of footstool are quilted with 200 g/m² polyester.

The rear of each item is held within a round-shaped piece which is zipped into place (metal-fronted zip). This round may be covered in 5 mm thick wool felt.

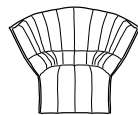


SOFA - NEW QUILTING LOW BACK EXTERIOR IN FELT

DIMENSIONS

H 32 " - W 81 " - D 35 " - SH 16 " -

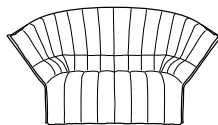
Other sizes



armchair - original quilting
low back exterior in felt

DIMENSIONS

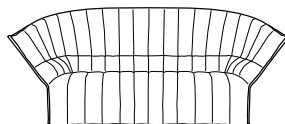
H 32 - "
W 41 - "
D 35 - "
SH 16 - "



loveseat - original quilting
low back exterior in felt

DIMENSIONS

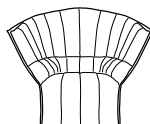
H 32 - "
W 61 - "
D 35 - "
SH 16 - "



sofa - original quilting low
back exterior in felt

DIMENSIONS

H 32 - "
W 81 - "
D 35 - "
SH 16 - "



armchair - original quilting
high back exterior in felt

DIMENSIONS

H 38 - "
W 45 - "
D 39 - "
SH 16 - "

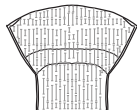
COVERING MATERIALS

The covers of the inside faces are ordered separately from those of the external round, thus making it possible to create a bi-material and/or bicolor interpretation.

The footstool is also a bicolor piece: Inga Sempé advises using the same covering material for the top surface as that used for the round of the armchairs/sofas, and the same covering material for the main part of the footstool as that used for the inside faces of the armchairs or sofas.

More info at
www.ligne-roset.com

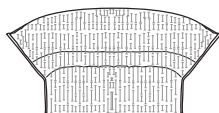
© Ligne Roset 2018



armchair - new quilting low
back exterior in felt

DIMENSIONS

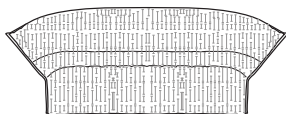
H 32 - "
W 41 - "
D 35 - "
SH 16 - "



loveseat - new quilting low
back exterior in felt

DIMENSIONS

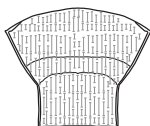
H 32 - "
W 61 - "
D 35 - "
SH 16 - "



sofa - new quilting low back
exterior in felt

DIMENSIONS

H 32 - "
W 81 - "
D 35 - "
SH 16 - "



armchair - new quilting high
back exterior in felt

DIMENSIONS

H 38 - "
W 45 - "
D 39 - "
SH 16 - "



small ottoman - original
quilting exterior in felt

DIMENSIONS

W 24 - "
D 18 - "
SH 15 - "



small ottoman - new quilting
exterior in felt

DIMENSIONS

W 24 - "
D 18 - "
SH 15 - "