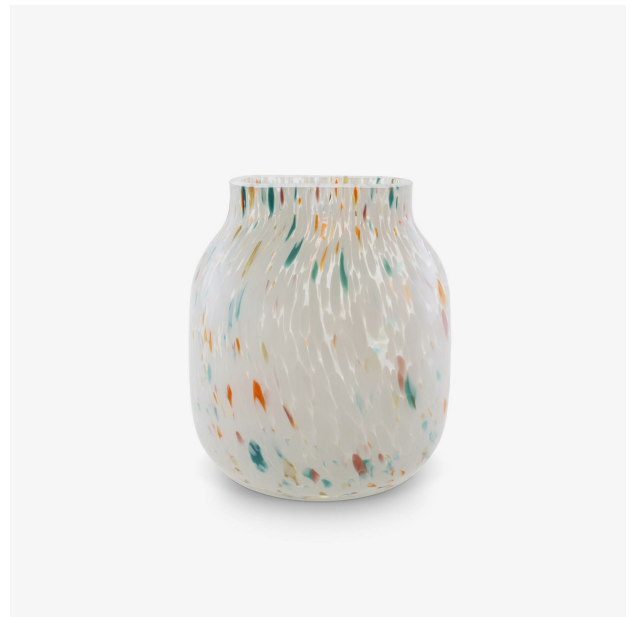


VASE SMALL MULTICOLOUR FILEA

Designer

Daniel Debiasi & Federico Sandri



Description

Vase in transparent multicoloured mouth-blown vase (white, lilac, grey blue, orange, smoked).

Technical specifications

The principal originality of these vases resides in the long, narrow opening which skilfully counters the imposing base. Flowers can thus be arranged in a single-file line of vegetation. In the low version in matt white porcelain, it could be seen as a stylised iron, whilst the large version in amber-tinted glass with mercury glass interior is like an ancient jar. - Vase in mouth-blown amber-tinted glass with mercury glass interior. - Vase in matt white moulded porcelain, with biscuit porcelain on the exterior and clear enamel on the interior. - Vase in transparent multicoloured mouth-blown vase (white,

Dimensions

Height 227 mm | Diameter 200 mm | Weight 2.5 kg

lilac, grey blue, orange, smoked).