

OUTDOOR

2023 — 2024

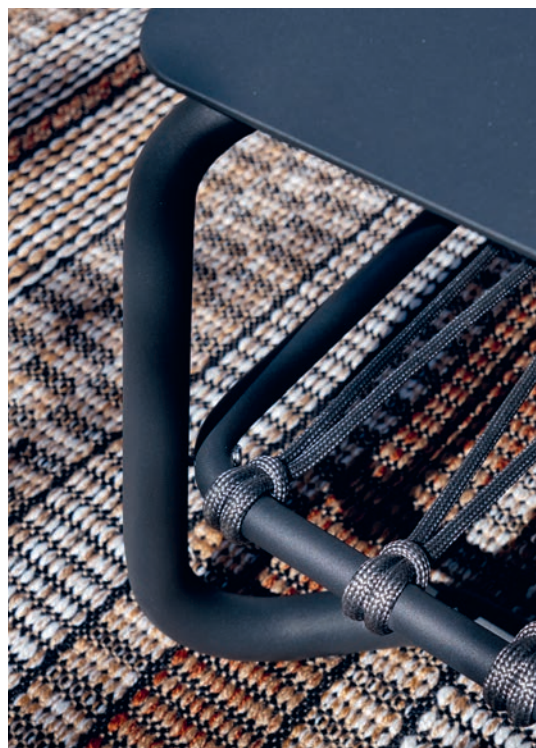


ligne roset®
outdoor

A photograph of a modern outdoor lounge set in a lush garden. The set includes four light gray sofas with dark metal frames, arranged in a U-shape. Each sofa is adorned with several pillows in shades of gray, beige, and patterned. In the center are two low, dark metal coffee tables. Two tall, slender floor lamps with white conical shades stand on either side of the seating area. The entire set is placed on a large, rectangular rug with a complex, multi-colored geometric pattern. The background is a dense wall of green trees and foliage, with a clear blue sky visible through the leaves. The overall atmosphere is serene and sophisticated.

VALMER

Guggenbichler Design



To complement the Valmer bench launched in 2022 and offer a complete garden set, the Valmer range is now available as a low table and occasional table. The structures use the same codes as the bench, in charcoal coloured lacquered aluminium, grey rope braiding, 100% polypropylene.

LOW TABLE H41 L87 D87 BENCH H78 L201 D90 OCCASIONAL TABLE H64 L43 D43

OTTOMAN

Noé Duchaufour-Lawrance

06



It was while working on a concept for a hotel in Marrakech that the designer had the idea for this model, inspired by the traditional Moroccan footstool. The project never got off the ground but we were captivated by the oriental charm of this piece, filled with 'zenitude', comfort and wellbeing.

Noé Duchaufour-Lawrance, through his work on quilting and colour, knew how to bring the creative 'added value' which has rooted the model in modernity, 'for keeps'.

Outdoor fabric with wave effect, woven in North of Fance in an EPV*. Factory owned by Pierre Frey.

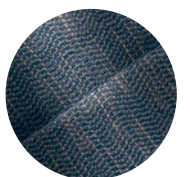
*EPV : Entreprise du Patrimoine Vivant :
Living Heritage Company



ARMCHAIR IN ROMA PAON H68 W100 D93



SMALL SETTEE IN ROMA PAON H68 W165 D93



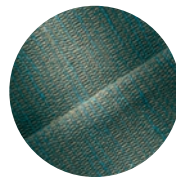
Fabric ROMA,
colour PAON



A re-release of a pioneering model from 1965, Saparella consists of a fireside chair, a diablo and a footstool.

This modular range of seating enables one to create and modify compositions as desired, on a terrace or in a garden. This composition, with its rounded, airy lines, issues an invitation to relaxation and conviviality and encourages one to make the most of a beautiful day.

The diablo, the central element, draws inspiration from the toy of the same name.



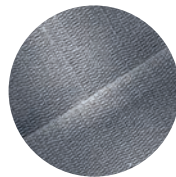
Fabric ROMA,
colour SAUGE



FIRESIDE CHAIR H68 W78 D100



SETTEE H68 W220 D100



Fabric ROMA,
colour CHAUX



MURTOLI

Christian Werner

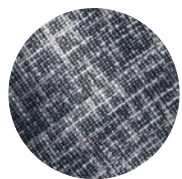




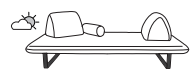
The Murtoli designed for the outdoors goes inside, which confirms the permeability of spaces: In gets out (cf Ottoman), and Out gets in (cf Murtoli).

Our research for indoor comfort (thanks to our expertise on foams and more than 20 different densities used), has enabled us to create an outdoor collection with similar comfort, since we use the same foams, protected by a water-repellent cover. A product designed for the outdoors already has the indoors comfort.

The back cushions, all in foam and weighted with a 15mm ABS plate (outdoor) to provide a support surface for the non-slip material, are protected by a water-repellent undercover (outdoor).



Fabric GAYAC,
colour PIERRE



SETTEE H81 W240 D120



FOOTSTOOL W120 D120







OONA - CHRISTIAN WERNER

Oona is a black synthetic rattan chair made in Indonesia (ancestral know-how) with an ardoise (slate) lacquered base that makes the chair durable and weather and UV resistant, perfect for outdoor use. This is the Outdoor version of the Libra 2 chair.



NOOMI - TOUS LES TROIS

Noomi is the essential small dining table with a tilting tray that has joined the collection. It can be used both indoors and outdoors. This dining table is reminiscent of bistro tables, but with a touch of modernity.

Dining table with a tilting tray (pivot + handle in injected aluminum). Structure and tray in charcoal coloured lacquered aluminium with a textured finish. When the tray is raised, the dimensions are: H 111.7 cm x W 70 cm x D 43 cm.



SET OF 2 CHAIRS H85 W50 D62



DINING TABLE H40 W6



SABBIA

Design by CINNA



Sabbia is a deck chair with sling in an outdoor fabric, a high-quality batyline.

The structure is in aluminium with stops/notches molded to adjust the seat; underneath, invisible plastic pads. The parallel rods are delivered disassembled on which the sling will be slipped.

The water-repellent sling is equipped with a cushion that is not detachable.

The black Elios batyline fabric is robust and offers exceptional abrasion resistance. The weaving combines the performance and durability of batyline thanks to a textured yarn and offers a unique level of softness and comfort and resistance.



SET OF 2 DECK CHAIRS H69 W65 W105



The image shows a rooftop terrace with a wooden deck. On the left, there are several rectangular wooden tables with matching wicker chairs. In the center, a tall, curved floor lamp stands. On the right, there is a white sofa and several wicker armchairs with white cushions, arranged around small round tables. The terrace is decorated with string lights and potted plants. In the background, a city skyline is visible under a twilight sky.

LAPEL

Busetti Garuti Redaelli



LOW BAR CHAIR



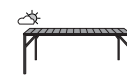
HIGH BAR CHAIR



DINING TABLE

LAPEL is named after the English word for the collar of a jacket, or the top of a boot. The weaving, executed in Indonesia, is extremely complex since a taut, perfect finish is required. Its originality lies in its collar-like folded back, which brings perfect comfort. LAPEL gives an impression of comfort and lightness thanks to its aluminium structure and collar-like synthetic rattan backrest.

A light, functional outdoor table with a teak top set on an aluminium base.



DINING TABLE H75 W200 D90



CARVER CHAIR H74 W62 D60



ARMCHAIR H90 W89 D84



HIGH BAR CHAIR H98 W57 D53



CHAIR H76 W62 D57



LOW BAR CHAIR H87 W57 D53

MESCAL



Made in the pure Indian tradition on a manual loom, Mescal offers aesthetics, ethnic patterns for the exterior and above all resistance and durability that coordinate perfectly with the Valmer and Lapel collections. The materials are in braided PET with a waterproof treatment. This material is made from recycled bottles.

The rug and the cushion are still made in the pure Indian tradition on a manual weaving loom. The Mescal rug is a woven outdoor rug that is made from 100% polyester fibers, and in particular from the recycling of 80 to 85 plastic bottles. This gives it strength and durability. Mescal features a variety of colours, and patterns to fit any decor styles. It is also easy to clean.



RUG W200 L300



CAÏPI

The Caipi cushion*, embroidered with a golden pattern, is designed for outdoor use. It is made in polyethylene terephthalate (or PET) which is a very resistant and flexible synthetic material.

PET is usually made of fibres mixed with binders which offer texture and durability. It is also known to be a hypoallergenic and stain resistant material. These qualities make it a very popular material for cushions, as it is easy to clean and maintain its shape and comfort for many years.



MESCAL

Made in the pure Indian tradition on a manual loom, Mescal cushion* is designed for outdoor use. It is made in polyethylene terephthalate (or PET) which is a very resistant and flexible synthetic material. PET is usually made of fibres mixed with binders which offer texture and durability. It is also known to be a hypoallergenic and stain resistant material. These qualities make it a very popular material for cushions, as it is easy to clean and maintain its shape and comfort for many years.



* Cushion filling sold separately, in polyester fiber, completely designed for outdoors.

CUSHION COVER H45 W45



