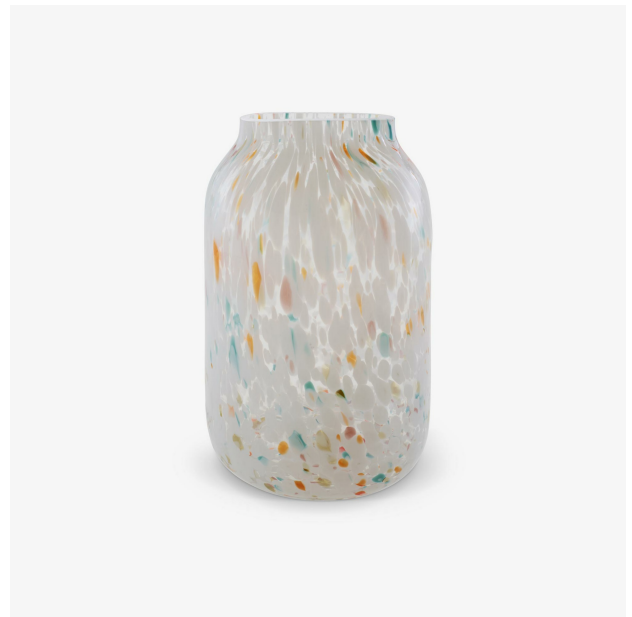


# VASE LARGE MULTICOLOUR FILEA

## Designer

Daniel Debiasi & Federico Sandri



## Description

Vase in transparent multicoloured mouth-blown vase (white, lilac, grey blue, orange, smoked).

## Technical characteristics

The principal originality of these vases resides in the long, narrow opening which skilfully counters the imposing base. Flowers can thus be arranged in a single-file line of vegetation. In the low version in matt white porcelain, it could be seen as a stylised iron, whilst the large version in amber-tinted glass with mercury glass interior is like an ancient jar. - Vase in mouth-blown amber-tinted glass with mercury glass interior. - Vase in matt white moulded porcelain, with biscuit porcelain on the exterior and clear enamel on the interior. - Vase in transparent multicoloured mouth-blown vase (white,

## Dimensions

Height 320 mm | Diameter 200 mm | Weight 4 kg

lilac, grey blue, orange, smoked).