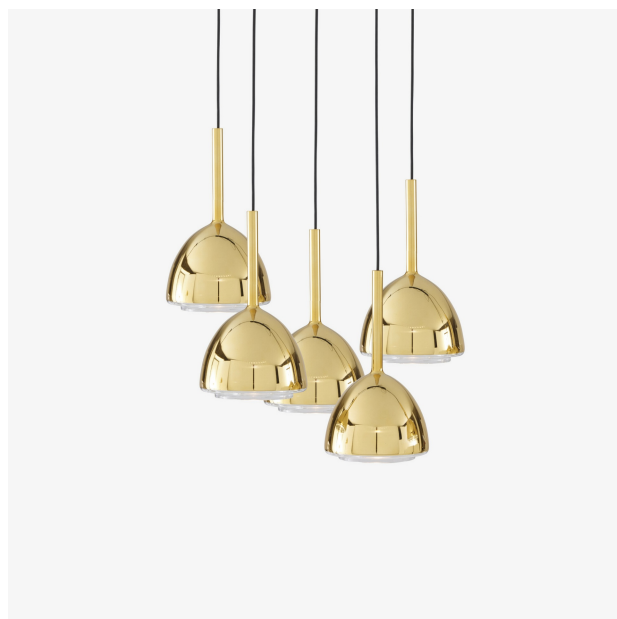


SUSPENDED CEILING LIGHT 5 CABLES BRASS BELL

Designer

Patrick Zulauf



Dimensions

Height 1,840 mm | Diameter 485 mm | Weight 5.9 kg

Description

Borosilicate glass, having a low coefficient of thermal expansion, is less sensitive to temperature shocks. A warm alliance of copper and zinc, brass is the only metal capable of imitating gold. It is noted for its colour, which varies from pink to yellow. When unlit, the shade is golden brass in appearance. When illuminated, the brass-coated glass becomes transparent, with the bulb becoming visible in a surprising hologram effect. 5-cable suspended light with 5 shades H 29.5 cm / Ø 16.5 cm in semi-transparent brass-coloured borosilicate glass. Epoxy satin black lacquered ceiling fitting H 4,5 – Ø 38 cm. Round black PVC cable (150 cm). Supplied with 5 x 5 W Gu10 dichroic full glass LED bulbs (not dimmer) - angle of diffusion 32°, Colour temperature 2700K (warm white), 400 Lumens.

Technical characteristics