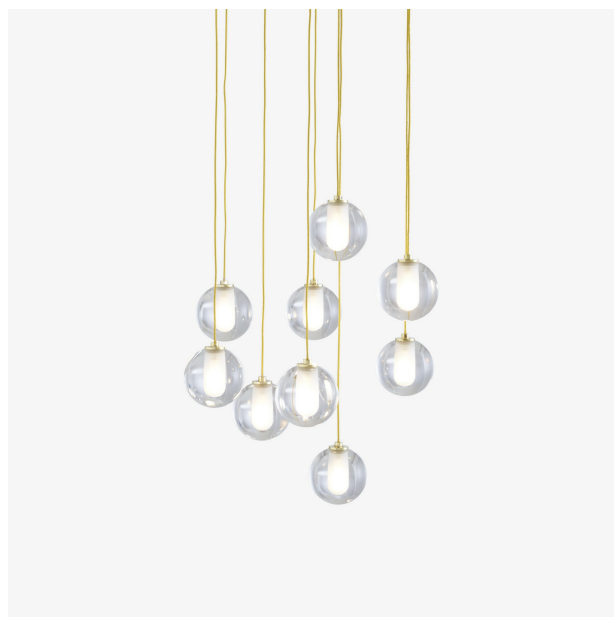


CALOT

Designer

Patrick Zulauf

Technical characteristics



PRODUCTS

**TABLE LAMP CHROMED STEEL STRUCTURE / WHITE
BASE**



Dimensions

Height 380 mm
Diameter 90 mm
Weight 1 kg

**TABLE LAMP BRASS-COATED STEEL STRUCTURE /
BLACK BASE**



Dimensions

Height 380 mm
Diameter 90 mm
Weight 1 kg

**READING LAMP CHROMED STEEL STRUCTURE /
WHITE BASE**

More information on
www.ligne-roset.com

ligne roset[®]
depuis 1860

© Ligne Roset 2025

**Dimensions**

Height 1,150 mm
Diameter 140 mm
Weight 2 kg

READING LAMP BRASS-COATED STEEL STRUCTURE

/ BLACK BASE

**Dimensions**

Height 1,150 mm
Diameter 140 mm
Weight 2 kg

SUSPENDED CEILING LIGHT 9 CABLES**Dimensions**

Height 2,610 mm
Diameter 400 mm
Weight 6.45 kg