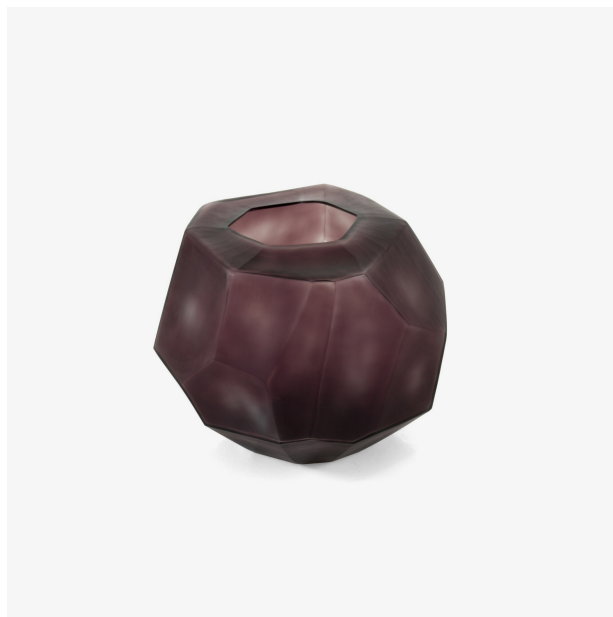


ASYMMETRIC

Technical characteristics

The Asymmetric vase is made of moulded tinted glass, with a double layer, mouth-blown, moulded, sculptural shape, faceted like a diamond, semi-opaque finish.



PRODUCTS

SET OF 2 VASES AMETHYSTE



Dimensions

Height 8 mm
Width 11 mm
Depth 11 mm
Weight 10.2 kg

SET OF 2 VASES KHAKI



Dimensions

Height 8 mm
Width 11 mm
Depth 11 mm
Weight 10.2 kg